

He hōnore, he korōria ki te Matua nui i te rangi
He maungarongo ki runga i te mata o te whenua
He whakaaro pai ki ngā tāngata katoa, āmine.

Ka whakahōnore tō tātou Kīngi
rātou ko te whare Kāhui Ariki, Paimārire.

Ki ngā mate, moe mai rā ki roto i ngā ringa kaha
o tō tātou Matua i te rangi.

Rātou te hunga mate ki a ratou, tātou ngā urupā o rātou mā,
e whakakotahi nei ki raro i te maru o te Kīngitanga

Paimārire ki a tātou katoa

Ngā kaupapa o te wā

22 Nov	First day back to kura for Tau 9-10
1 Dec	L2 Reo Pakeha
(PM)	L1 Kaiurungi
	L3 Koiora
2 Dec	L1 Reo Pakeha
(PM)	L2 Kaiurungi
3 Dec	L1 Kaipakihi
	Scholarship Te Reo Rangatira
(PM)	L1 Koiora
	SENIOR PRIZEGIVING
6 Dec	L1 Te Reo Māori
7 Dec	L1 Putaiao
(PM)	L3 Mātai Matū
8 Dec	L3 Reo Pakeha

9 Dec	L2 Kaiora
(PM)	L2 Te Reo Māori
10 Dec	Scholarship Te Reo Māori
	JUNIOR PRIZEGIVING
13 Dec	L2 Kiapakihi
14 Dec	L3 Te Reo Rangatira
	LAST DAY OF THE YEAR
15-16 Dec	TOD (teachers only day)

**Te Pō Tuku Taonga mō ngā tuākana o te kura
Tau 11-13**

SENIOR PRIZE-GIVING & GRADUATION



Kia ora e te whānau, due to covid restrictions and the safety of our ākonga, whānau and community, we have made the extremely difficult decision to have a celebration this year with **STUDENTS ONLY**. We know this will be heart-breaking for whānau. We were extremely hopeful that things would change, but unfortunately they didn't. The health and safety of our students is of paramount importance to us.

- The event will be on Friday 3 December at 3pm. We will be live-streaming the event and will send the link out to whānau.
- We request that all Tau 11-13 students arrive to kura on Friday 3 December, no later than 2pm so we can go through the proceedings for the event. Students must have correct number 1 uniforms and boys must be clean shaven. Please let your son/daughter's Kaiārahi know if they don't have transport to come to kura.
- Students will need to eat before they arrive to kura.
- We ask that whānau arrange pick-up after the event. The estimated time will be 6pm, but you can get an indication from watching the live-stream.
- We also ask **junior kapa haka performers** and **Tū Taua students, Pou rua and above**, to also attend the event in their correct number 1 uniforms. They will need to bring extra snacks that day.
- All junior students will finish kura at 12pm after lunch break on Friday. Buses will leave kura at 12.05pm.
- The same restrictions will apply for our junior prize-giving on 10 December.
- Finally, whānau, please don't turn up and try to sit on the bank. Our kaiako will need to turn you away. Apologies e te iwi, please remember that it's all because of safety.

Ngā mihi nui, Whaea Michelle Ohia.

SCHOOL BUSES



UNDER ALERT LEVEL 2 FACE COVERINGS OR FACE MASKS ARE MANDATORY ON SCHOOL BUSES FOR ANYONE OVER THE AGE OF 12.

Our Bus Drivers will have to turn away taura if they do not wear a face mask (they don't want to, however it is a requirement)



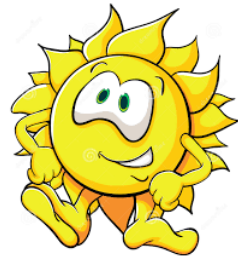
When we move to the new traffic light system, commencing 2 December 11.59pm.

RED: Face coverings will be mandatory on flights, public transport, in taxis, retail, public venues and recommended whenever leaving the house.

ORANGE: Face coverings will be mandatory on flights, public transport, in taxis, retail, public venues and encouraged elsewhere

GREEN: Face coverings mandatory on flights, encouraged indoors.

SUN SMART



Our taura are currently working on various Tuku Iho Projects around the kura over the next few weeks. Many of them outside in the sun, so to help protect them from the elements could you please ensure they have

- Hat
- Sunblock
- Water Bottle

UNIFORMS



Number 1's are to be worn for Prize-Giving and Graduation.

KŌTIRO: Black Skirt, White Shirt, Tie, Black Jersey (Vest-Yr 13)
Black hosiery and shoes.

TAMA: Black Trousers, White Shirt, Tie, Black Jersey (Vest-Yr 13)
Black socks and shoes.

KŌTIRO



Sanitary Products are available for all our kōtiro! We have them packaged in warehouse bags ready to be collected from the tari before 10 December.

VOLUNTEERS FOR MAHI HĀKINAKINA 2022

Tēnā tātou katoa,

Kei te mihi atu ki ngā hunga i tautoko te mahi hākinakina o Ngā Taiātea Wharekura mo te Tau 2021. Ahakoa ngā piki, ngā heke na te Kowheore ka haere tonu te mahi. No reira, e kore me mutu aku mihi ki ngā kaiako, ki ngā kaitiaki, ki ngā kaiarahi, ki ngā whānau o ngā tīma katoa.

E karanga atu tēnei ki ngā hunga e hiahia ana ki te tautoko ngā mahi hākinakina o Ngā Taiātea Wharekura. Tokomaha ngā kaiako, ngā kaiarahi e hoki mai ana ki te tautoko no reira e hiahia ana ki te tautoko, tēnā haere mai.

First of all, a huge mihi to our wonderful coaches, managers and whānau who supported our Sports for 2021. Although 2021 was another challenging year due to Covid, our wonderful volunteers continued to support our kaupapa and provide our ākongā with opportunities to participate in sport.

We are very fortunate to have a number of coaches and managers returning next year and I want to thank all of you who have committed yourselves to our Wharekura again for 2022.

We are always keen to provide opportunities for our ākongā and the more volunteers we have the more opportunities we have to offer. Please find, e te whānau, this is a tono to any of you who would like to help our Wharekura in the Sporting arena in 2022 to register your interest. The main sports we offer at the moment are Waka Ama, Ki-o-rahi, Touch, Volleyball, Basketball, Netball and League. However, if you have a sport you are passionate about that you would like to try and establish in our kura then please register your interest. We are always looking to grow this area.

Please click on the link and fill out the document to register your interest. If you can't access this document, please email me and I can email you the document to fill in and return. You can also email, private message or call me to register your interest.

https://docs.google.com/forms/d/e/1FAIpQLSewVlqGIF-yLu33qNnVFCN28_E90zVi5EbtUkv3c0KoGRaE0w/viewform?usp=sf_link

Ngā mihi manahau,

Romana Rolleston

Sports Coordinator

Ngā Taiātea Wharekura

CONFISCATED ITEMS - 2022

Ko te tamaiti te pūtake o te kaupapa!
“E Maaori ai te tangata, me pai mutunga.”

Koinei ngaa tikanga moo te tau 2022:

1st offence - Warning/Mini-Chat confiscate item - student access at end of school. Kaiako enters FIRST OFFENCE into KAMAR.

2nd - Consequence Lunchtime Tuesday/Thursday DT - Student put on a Tech report which means they hand in the item to the office each day in the morning and sign it out at the end of the day for a week. Kaiako enters SECOND OFFENCE into KAMAR.

If it is an item of clothing/earrings ...etc it stays in the Tari (Taura Here) safe for the week.

3rd - Mini-Chat Consequence Afterschool DT - Parent needs to come in and collect item. Kaiako enters THIRD OFFENCE into KAMAR.

ATTENDANCE & ABSENCE FROM SCHOOL - 2022

Tēnā koutou e te whānau. He mea nui te mahara ake, ko te hiahia kia eke ō tātou uri ki te tihi o angitu. Me pēhea e taea ai? Mā te tae-ā-tinana ki te kura, mā te upoko pakaru.

Looking forward to 2022 and letting whānau know now.

We are working closely with Te Kōhao Health Attendance Services to address some of our student's attendance at kura and tautoko whānau to support our taura coming to kura.

Here is how we will work with the Attendance Services:

3 Days Unexplained absence Kura contact whānau to follow up on students. If there is no reply, then

- 1.) Referral to Attendance Services
- 2.) Attendance Services makes contact with whānau and reports back to kura.

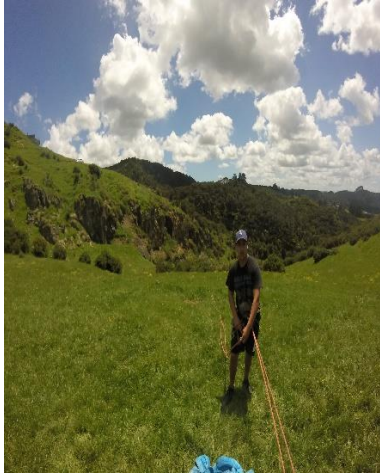
10 Days Unexplained absence During this time kura will try to contact whānau to come and hui. If there is no response, then truancy referral to Attendance Services

- 1.) Repeat Plan then Attendance Services meet with whānau and kura. Work with whānau to address the reason for absence (For example budgets, kai, travel)

Ngā mihi manahau ki a koutou. Mā te atua koutou e manaaki

Nā Matua Anaru

HAUORA – TAU 12 HAERENGA KI KARAMU.



Teena koutou e te Whaanau

I haere taku karaihe Hauora tau ngahuru maa rua ki Karamu i teeraa wiki kua taha ake nei. I haere raatou ki reira moo aa raatou aromatawai whakamutunga moo te tau nei “ ko te kake toka” (Rock Climbing). Mai i te tiimatanga o te waahanga toru i ako i ngaa mahi e haangai ana ki te kaupapa nei. Me peehea te tiaki te kaikake (Belaying), me peehea te herea te kaikake ki toonaa haarihi (Harness) me eeraa atu momo mahi. Ahakoa he uaua te mahi i eke panuku te katoa o raatou i haere ki te kaupapa. Ngaa mihi nui ki a Matua Harry raaua ko Whaea Valerie ngaa kaiwhakahaere mai i a Wintec. Kei raro iho ngaa whakaahua, mauri ora. Naa Matua Kiingi

